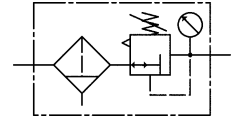




572.14 D



FRES.G12R.1-15B



Stainless steel filter regulators with self-relieving (not for liquid media) containing no non-ferrous metals for use in the food processing, chemical, mining, plant construction and special machinery industries as well as in the medical technology.

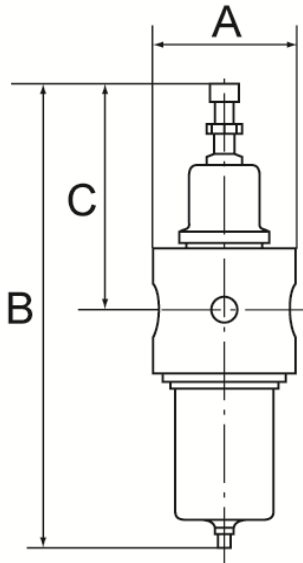
Max. input pressure	30 bar
Max. medium temperature	80 °C
Max. ambient temperature	80 °C
Control range	1 – 15 bar
Housing	Stainless steel 1.4404 (AISI 316L)
Sealant	FKM
Diaphragms	PTFE on NBR carrier
Condensate drain	Manual drain valve
Filter rating	50 µm
Flow rate	3000 l/min
Flow rate measurement	at $P_1 = 8$ bar, $P_2 = 6$ bar and pressure drop $\Delta p = 1$ bar

Reversible, stainless steel pressure regulator with self-relieving design, manual drain valve and stainless steel pressure gauge

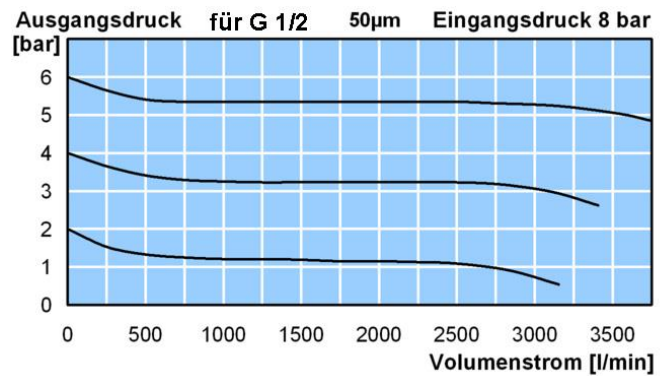
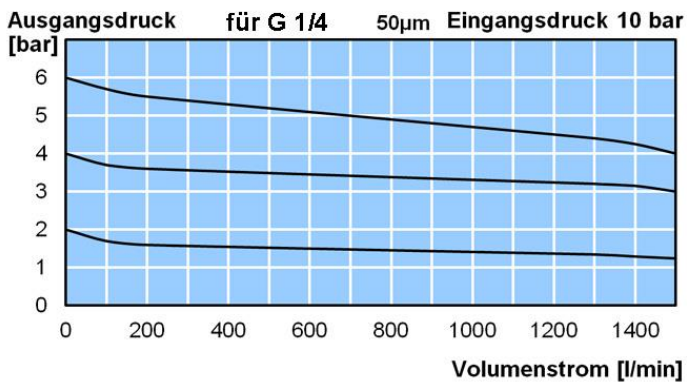
Art. No.	Type No.	Thread	Flow rate l/min	A mm	B mm	C mm
101207	572.14 D	G 1/4	800	64.0	249.0	121.0
129274	FRES.G12R.1-15B	G 1/2	3000	109.0	246.0	121.0

- With NPT Thread available on request
- Other control ranges, temperature ranges and FDA-approval available on request
- With filter element 5 µm available on request
- Without self-relieving design (for liquids) available on request
- With semi- or fully automatic drain valve on request

Dimensions:



- Any liability is excluded in case of use of harmful and explosive media



Accessories / spare parts

Art. No.	Type No.	Description
101199	576/1	Mounting bracket with nut M45x1.5
101200	576/3	Mounting bracket with nut M50x1.5
101201	4084	Pressure gauge Ø 63 mm, G 1/4 ET, 0 – 10 bar
101202	4085	Pressure gauge Ø 63 mm, G 1/4 ET, 0 – 16 bar
101209	22.57244.4	Set of wearing parts for G 1/4
129673	VTSFRES.G12.RÜ	Wear part set for G 1/2